

## ABOUT CLEAR55A®

Clear55A® was designed to provide an optimal balance of handling, comfort and vision. The lens has been enhanced with aberration correcting aspheric optics to optimize the overall visual experience and encompasses a design philosophy that addresses the wearer's handling and comfort needs.

### OVERALL BALANCE

The performance of Clear55A® has been extensively tested through a range of clinical studies including a 120 patient double masked crossover study where it was compared with Acuvue® 2, Biomedics® and Frequency® 55A.

### OPTIMIZING VISUAL ACUITY THROUGH INNOVATIVE ASPHERIC DESIGN

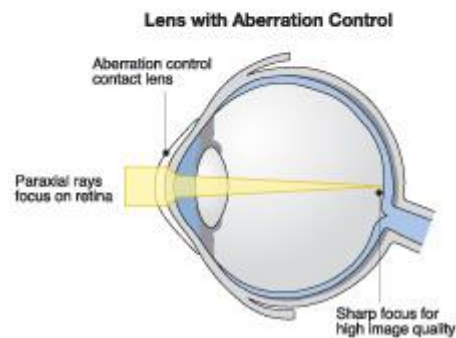
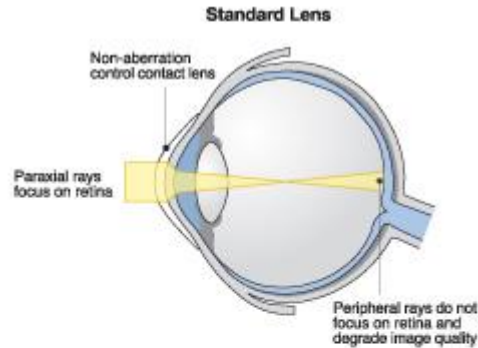
Clear55A®'s visual acuity is optimized over the power range and the incorporation of aberration correcting aspherics provides wearers with maximum contrast sensitivity, particularly in low illumination where it is needed most.

Patients who normally require low amounts of toric correction can benefit from Clear55A® as the aspheric optical design can successfully mask low levels of astigmatism.

### OPTIMIZING WEARER COMFORT, FIT AND HANDLING

Clear55A®'s peripheral and edge design provides a balance between excellent comfort and assured handling. The comfort and handling of Clear55A® was preferred by wearers compared with other leading brands.

Clear55A®'s larger diameter assists in centering the lens on the eye and ensures a wide latitude of fit over a wide range of corneal sizes, providing practitioners with a versatile fitting lens.



## SPECIFICATIONS - Clear55A®

<b>Material</b>	45% methafilcon A, 55% water
<b>Base Curve / Diameter</b>	8.7 mm / 14.5 mm
<b>Handling Tint</b>	Light Blue
<b>Lens Design</b>	Bi-curve back surface with unique tangential flat peripheral band. Tri-curve reducing optic anterior surface.
<b>Power Range</b>	Up to -8.00 0.00 to -6.00 (0.25D steps) -6.50 to -8.00 (0.50D steps)
<b>Nominal Centre Thickness*</b>	0.09mm @ -3.00D
<b>Oxygen Permeability Dk @ 35°C</b>	19.6 X 10 <sup>-11</sup> (cm <sup>2</sup> /s)(mlO <sub>2</sub> /ml.mm Hg)
<b>Refractive Index at 25°C</b>	1.6 (hydrated)
<b>Light Transmittance</b>	>95% over the visible spectrum
<b>Specific Gravity</b>	1.062 (hydrated)
<b>Lens Care Indications</b>	Peroxide or chemical lenscare, including MPS
<b>Pack Size</b>	6 lenses
<b>Regulatory</b>	CE marked & FDA 510K cleared

\*-3.00 D lens